



Bathing establishment Fact Sheet

Bathhouse name	STELLA
Address	Via Lungomare 42
City	Marina di Pietrasanta
Contacts	+39 058421904
Website	Not detected

TESTED BY: [Handy Superabile - Social Promotion Association](#) in summer 2023

Please note The following information refers to the verification date shown at the bottom of each card. **The Association** is not responsible for any significant changes made by the property after the visit.

Summary

Bathing establishment Fact Sheet	1
Arrival at the facility.....	2
Private/public parking.....	2
Pathway from the parking lot to the main entrance	2
Reception.....	4
Bar/restaurant	4
Internal Pathways and common services.....	6
Internal Pathways	6
Toilet and shower accessible to guests with reduced mobility	7
Changing room	8
Beach.....	8
Children's play area	9
Swimming pool	9
Doctors' Offices/Healthcare Facilities	10

Project carried out with the contribution of the

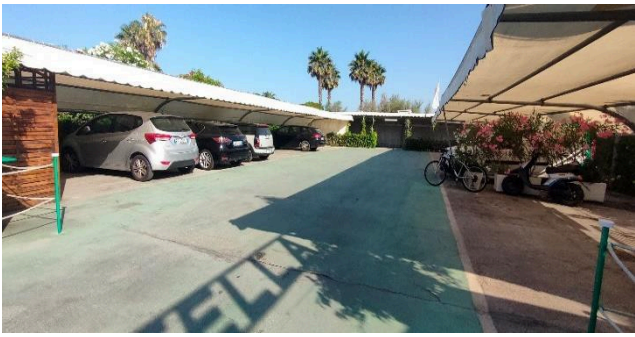


Presidenza del
Consiglio dei Ministri
Ministro per la disabilità



Arrival at the facility

Private/public parking

Presence of private parking	YES
Presence of parking space reserved for people with disabilities	YES
Type of parking surface	ASPHALT
Public parking nearby	YES
	

Pathway from the parking lot to the main entrance

Pathway from the car park to the entrance	Flat
There are markers and tactile maps	NO
Usable door/entrance width	more than 90 cm



Project promoted by



Regione Toscana



Project carried out with the contribution of the



**Presidenza del
Consiglio dei Ministri**
Ministro per la disabilità



Reception

Umbrella booking system	<input type="checkbox"/> Via web <input checked="" type="checkbox"/> By phone <input checked="" type="checkbox"/> On-site
Presence of multilingual staff	YES
Presence of plant plan with key to services available	NO
Presence of visuo-tactile map	NO
Bulletin board/information panels at an average height of 130 cm in a well-lit area and font size at least 14 dpi with a contrast ratio greater than 4.5:1	NO
The staff attended training courses on welcoming people with different disabilities	NO

Bar/restaurant

Type of venue	Bar/restaurant
Access to the premises	via ramp length 190 cm, width 200 cm, gradient 8 %
Usable door/entrance width	more than 90 cm
Bar counter	height greater than 100 cm
Types of tables	4-legged
Space underneath the tables from the floor	66 cm
Multilingual menu	YES
Menus with large print fonts	NO
Braille menu	NO
Table service for people with disabilities	YES



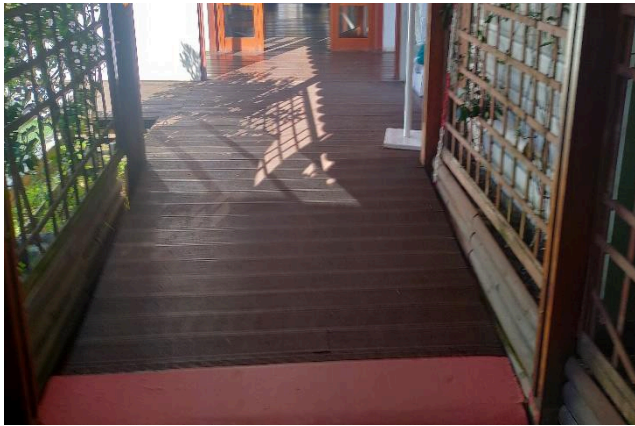
Project promoted by



Regione Toscana

Availability of gluten-free food

- bread pasta biscuits
 ice cream Pre-packaged foods



Project carried out with the contribution of the



**Presidenza del
Consiglio dei Ministri**
Ministro per la disabilità

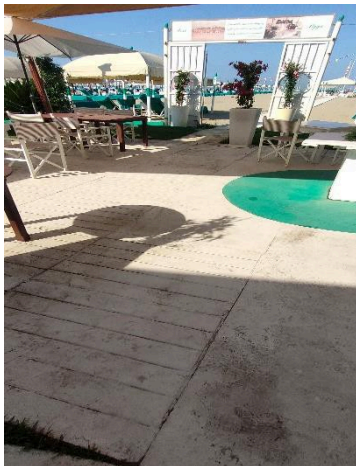


Internal Pathways and common services

Internal Pathways



Indicate whether the pathways connecting the entrance to the beach are flat or with ramps in addition to those already described

flat paths with a ramp 640 cm long and 90 cm wide with a gradient of 3.9 %





Toilet and shower accessible to guests with reduced mobility

Number of toilets accessible/usable by guests with reduced mobility	1
Access to the premises	by 2 ramps: the first length 190 cm, width 200 cm, gradient 8 %; second length 35 cm, width 150 cm, gradient 12.9 %
Usable width of the entrance door	more than 90 cm
Toilet height	51 cm
Open front toilet seat	YES
Support handles	on both sides of the toilet
Flexible hand shower at the side of the toilet	NO
Free space on the sides of the toilet	left 22 cm right more than 90 cm frontal more than 90 cm
Electric doorbell/phone	YES
Washbasin with space underneath for wheelchair	63 cm
Height from the ground on the bottom edge of the mirror	missing
Baby changing table	NO
	





Accessible shower available for guests with reduced mobility	NO
---	----

Changing room

Accessible changing room available for guests with reduced mobility	NO
---	----

Beach

Type of beach	sand
Access to the beach	by 2 ramps: the first length 190 cm, width 200 cm, gradient 8 %; second length 640 cm, width 90 cm, gradient 3.9 %
Walkway to reach the umbrellas	YES
Type of walkway	PVC
Walkway width	100 cm





<p>Removable Platform between the walkway and the umbrella station to facilitate the passage and parking wheelchair</p>	<p>YES</p>
<p>Amphibious beach chair available for helping people with reduced mobility to enjoy swimming (owned by the establishment or by association)</p>	<p>YES</p>

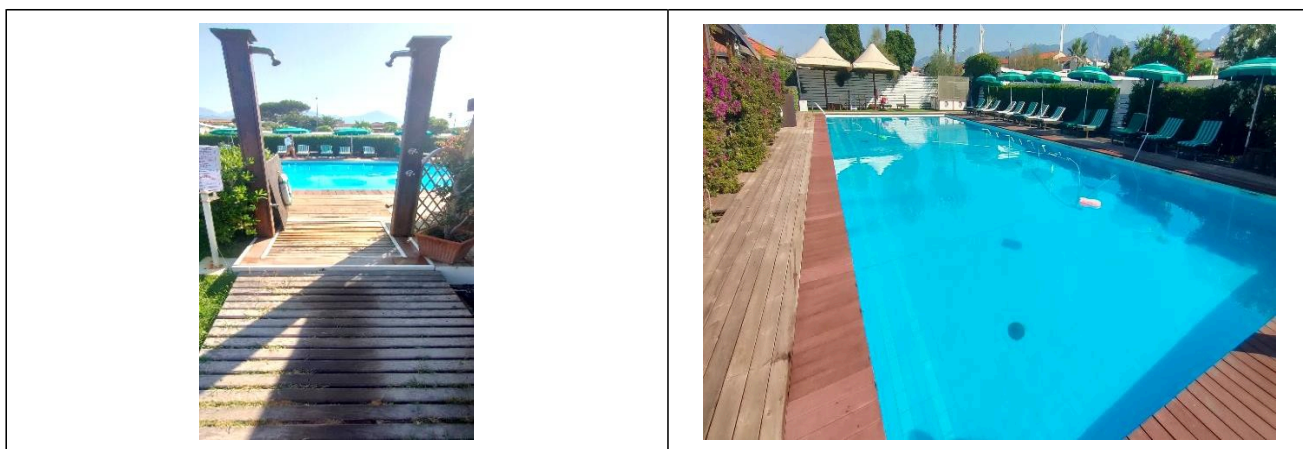
Children's play area

<p>Children's play area</p>	<p>missing</p>
-----------------------------	----------------

Swimming pool

<p>The property has a swimming pool</p>	<p>YES</p>
<p>Access to the swimming pool</p>	<p>via ramp length 130 cm, width 140 cm, gradient 8.9 %</p>
<p>Useful width of the entrance gate</p>	<p>90 cm</p>
<p>Access to the pool</p>	<p>with ladder</p>
<p>Bathing aids for guests with reduced mobility</p>	<p>Not present</p>





Doctors' Offices/Healthcare Facilities

Hospitals near the facility	Ospedale Versilia SS 1, 335, 55049 Camaiole LU Telephone: 0584 6051
Other Healthcare Facilities	<p>Distretto Sanitario ASL 12 Pietrasanta Via Martiri S. Anna 11 Tel. 05846058823</p> <p>Croce Verde Via Risorgimento, 1 Forte dei Marmi Tel. 058484013 free dialysis and first aid service for white codes</p> <p>Emergency medical service Via Martiri S. Anna Tel. 0584 616774</p> <p>Misericordia Via Mazzini Pietrasanta Tel. 058470055</p> <p>Medical service "San Camillo" Nursing Home Via P.I. da Carrara, 37 Tel. 0584 7391</p> <p>Dialysis service c/o Croce Verde Viale Italoico at the corner of Via Risorgimento Forte dei Marmi Tel. 058484013 affiliated with AUSL</p>

TESTED BY: Handy Superabile Social Promotion Association in summer 2023

